



800-758-5840  
www.Logistick.com

# LOGISTICK, INC

Innovators of Freight Securement Systems®

Thank you for your business and continued partnership.

If you have any questions about this product or any of our other products please email us at [sales@logistick.com](mailto:sales@logistick.com)



*Innovators of Freight Securement Systems®*

[www.logistick.com](http://www.logistick.com)

19880 State Line Road • South Bend, IN 46637-1545  
1.800.758.5840 • 574.271.2565 • FAX 574.271.2574

Revised March 2018  
L. 17

## The Complete INSTALLATION GUIDE for Logistick's FLOOR BRACE®, the one-way solution for securing light to medium weight loads.

For best results, please read through all instructions prior to installation.

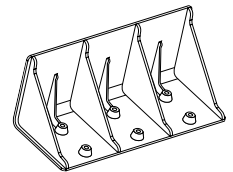
Watch an installation video at [www.Logistick.com](http://www.Logistick.com)



### Materials Needed:

- Floor Brace®
- Floor Brace Nails
- Hammer or Palm Nailer

**1 Prepping for Installation:** After loading freight, determine the best location for installation. Multiple Floor Brace may be needed to secure your cargo. Clean the area around the freight to ensure that the Floor Brace can be placed flat on the trailer or container floor without obstruction.



**2 Quantity and Placement:** Determine if it is a light, medium or heavyweight load. For light loads, a single Floor Brace should be positioned against the center stringer of pallet or center of non-palletized freight (Figure 2A).

For medium weight loads, two Floor Brace should be positioned against each outside stringer of pallet or corners of non-palletized freight (Figure 2B).

For heavy weight loads, three Floor Brace should be positioned against each stringer of the pallet or the corners and center of non-palletized freight (Figure 2C).

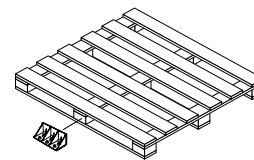


Figure 2A

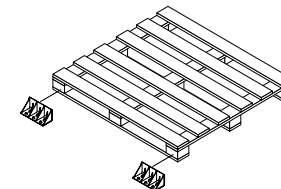


Figure 2B

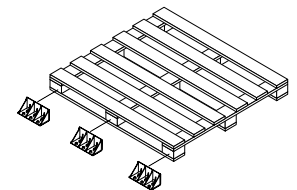


Figure 2C

To prevent lateral, side to side movement, position Floor Brace against either or both sides of the pallet or non-palletized freight (Figure 2D).

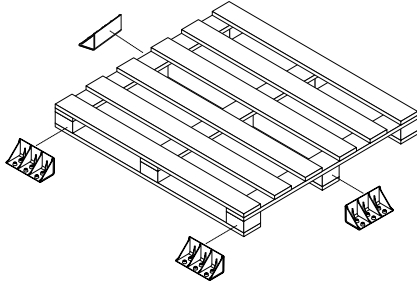


Figure 2D

If in doubt, please contact your sales rep for securement recommendations or email us at [Support@Logistick.com](mailto:Support@Logistick.com)

- 3 Installation of Floor Brace®:** Place Floor Brace in desired position against freight, making sure not to place nail holes over flooring cross members or fasteners. Hammer six Floor Brace Nails (Figure 3A) through nail holes directly into the trailer or container floor (Figure 3B). For faster, easier installation use a palm nailer (Figure 3C).



Figure 3A

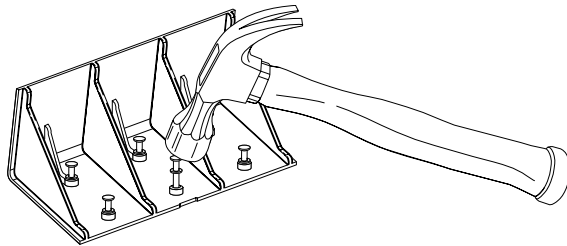


Figure 3B

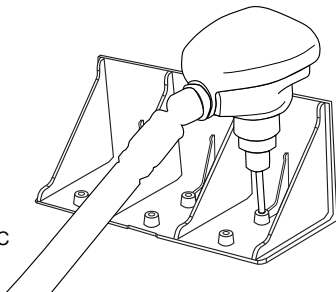


Figure 3C

**IMPORTANT:** Staple a copy of these instructions to the pallet or freight to assure safe, easy removal by consignee

**LOGISTICK**

800-758-5840  
www.Logistick.com

**LOGISTICK, INC**

Innovators of Freight Securement Systems®

**The complete REMOVAL GUIDE for Logistick's FLOOR BRACE®, the one-way solution for securing light to medium weight loads.**

Watch a removal video at [www.Logistick.com](http://www.Logistick.com)



**Materials Needed:**

- Wrecking bar (recommended), Prybar or Hammer

- 1 Removal of Floor Brace®:** Using a wrecking bar (recommended), prybar or hammer, pry the Floor Brace Nails from the trailer or container floor. There should be six nails to remove from each Floor Brace and the double head of the Floor Brace Nails will ensure ease of removal.

