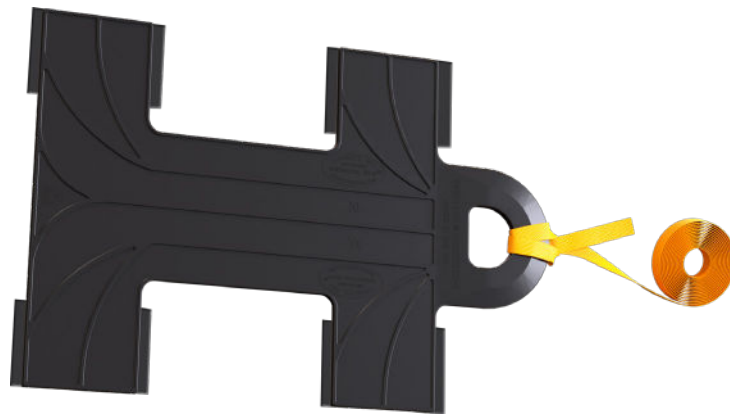




*Innovators of Freight Securement Systems®*

# **INTERMODAL STRAP® KIT XL**



**A step by step guide to  
installation and removal.**

Made in the  
**USA** 

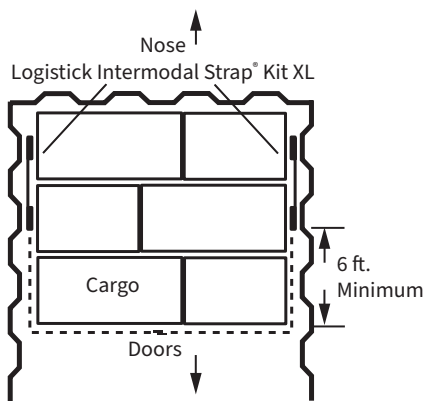


Innovators of Freight Securement Systems®

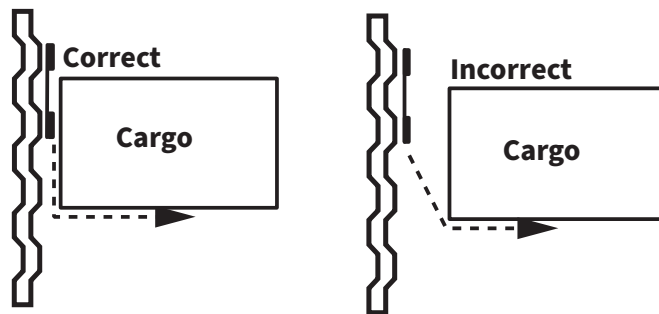
# INTERMODAL STRAP® KIT XL INSTALLATION GUIDE

## 1. Choosing the Application Area

Before or while loading the freight, determine the best location for installation. **Keep in mind that multiple sets of Intermodal Strap® Kit XL may be needed to safely secure your freight.** The Intermodal Strap® Kit XL is designed to adhere to the peaks of the container wall and should be placed an equal distance from the floor and **6 feet, or about 2 pallet rows, BEFORE the end of the load.** The wall void between the freight and the container wall needs to be 3 inches or less. This placement is critical because it helps maximize the shear strength of the Intermodal Strap® Kit XL.

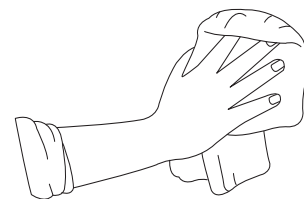


### Banding Placement



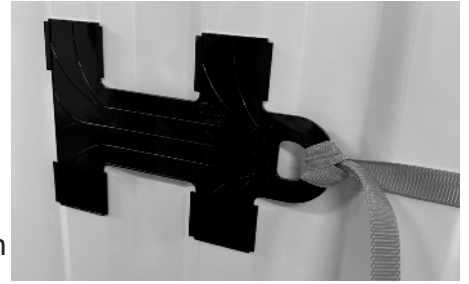
## 2. Prepping the Application Area

The entire application area must be clean and dry to ensure proper installation. Use a dry cloth, and if needed, a scraper and rubbing alcohol to remove loose dirt, dust, condensation or frost from the application area.



### 3. Adhering Intermodal Strap® Kit XL

The Intermodal Strap® Kit XL needs to be positioned so the entire adhesive surface on both wings will make direct contact with the container wall. The handles, which are the anchor points, must be directed towards the end of the load or in the direction the freight could move.



To install the first Intermodal Strap® Kit XL, remove the backing from both wings and place the Intermodal Strap® Kit XL on the wall and

**at least 6 feet before the end of the load.** Press firmly against the wings of the Intermodal Strap® Kit XL to assure that the tape bonds to the wall. Repeat this procedure with the second Intermodal Strap® Kit XL on the opposite wall, making sure that it's adhered at the same height.

**IMPORTANT: Once Intermodal Strap® Kit XL is installed, it cannot be repositioned.**

### 5. Temporarily Secure Banding

Using tape or a magnet, temporarily secure the two pieces of loose banding to the container wall so they will be out of the way and accessible after the freight is loaded.



### 6. Securing the Freight

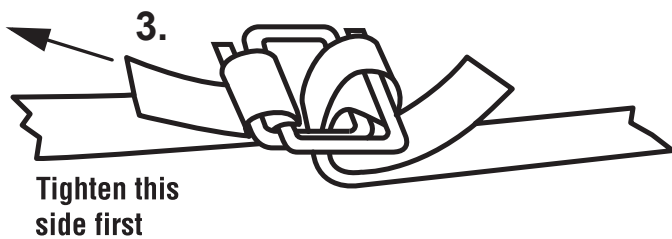
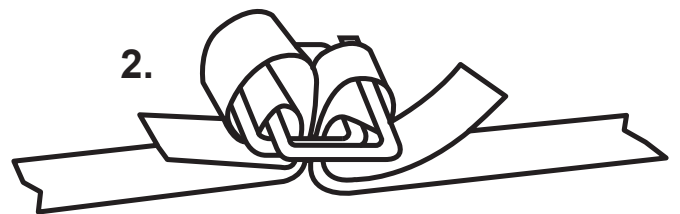
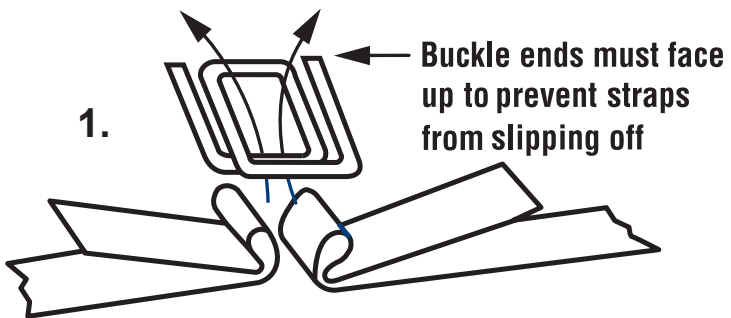
Once the remaining freight has been loaded, pull the two pieces of loose banding around the end of the load and use a buckle to fasten the pieces of banding together in the center of the load. **See page 5 for buckle installation.** Corner protectors may be needed to prevent the banding from damaging the packaging. After buckled, pull tight and then use a banding tensioner to secure the freight.





Innovators of Freight Securement Systems®

# Buckle Installation

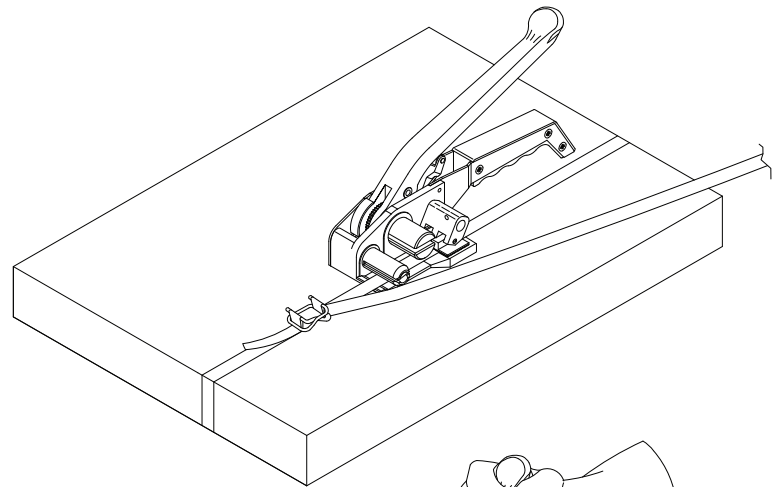




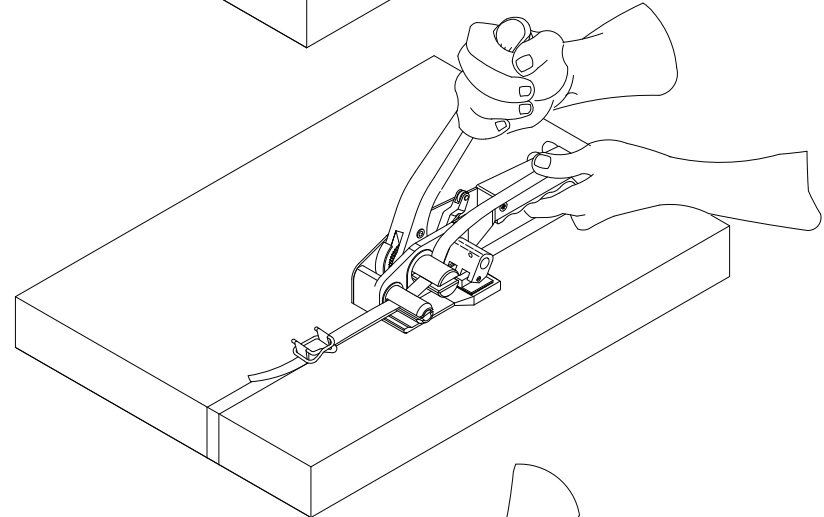
*Innovators of Freight Securement Systems®*

# Proper use for Banding Tensioner to tighten the load.

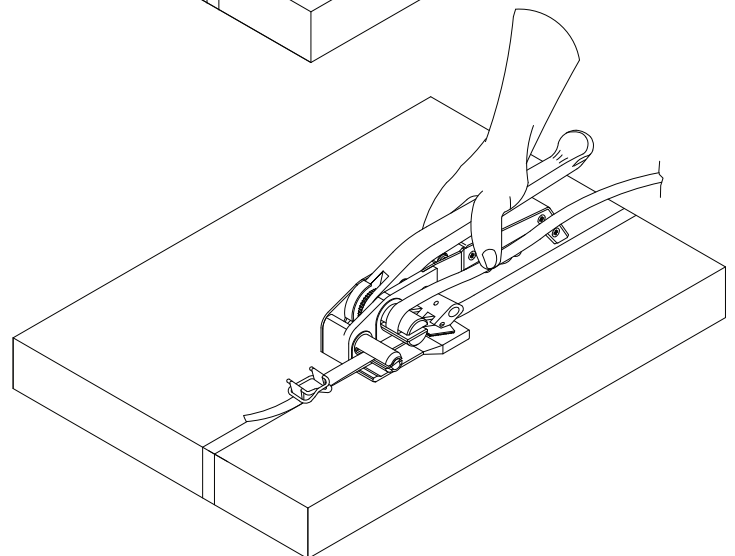
Take the tensioner by the right hand and depress tension lever. Place banding under the gripper so that it touches the housing with the right hand edge. Release tension lever.



Insert the upper banding into the slot of the cutter mechanism and the windlass. Hold the tool and banding with your left hand and move the tension lever forth and back until the banding is tensioned.



Depress the tension lever from the tensioner completely until the banding is cut. Pivot the tensioner away from the banding.

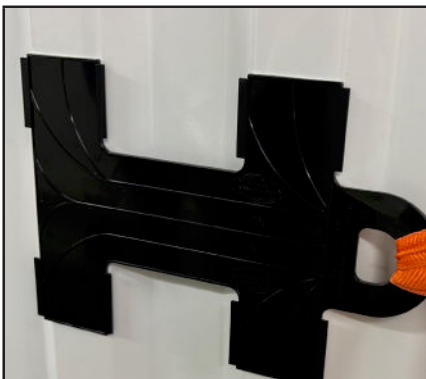




Innovators of Freight Securement Systems®

# INTERMODAL STRAP® KIT XL REMOVAL GUIDE

Removal should be completed using Logistick's **Intermodal Strap Removal Tool** to ensure safe and efficient detachment.



Locate the Removal tabs on each of the wings of the Intermodal Strap® XL.



Slide the Removal Tool 1-1 ½ inches onto the removal tabs, slowly apply pressure until tape begins to peel & release.



Ease off pressure and fully slide the removal tool onto the Intermodal Strap® XL. Slowly pull down and pry off the wall.



If the Intermodal Strap® XL doesn't fully release, reposition the tool onto the bottom tabs.



Lift and pry upward to fully remove the Intermodal Strap® XL.



Innovators of Freight Securement Systems®

# Intermodal Strap® XL Reuse Guidelines

Logistick's Intermodal Strap® XL can be reused multiple times if undamaged. Inspect the Intermodal Strap® XL carefully to ensure there are no cracks or peeling/shearing of the tape. If it is in acceptable condition, follow the steps below to attach new banding to the Intermodal Strap® XL.



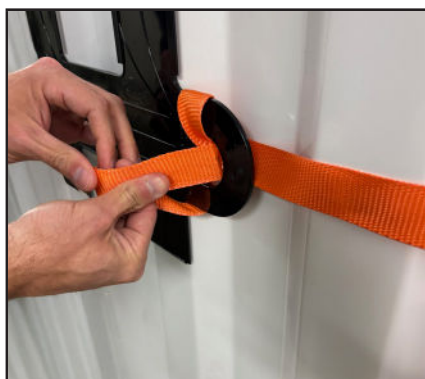
Place the banding against the container wall and slide through the handle opening.



Pull the banding to the back edge of the Intermodal Strap® XL to measure an adequate amount for the knot.



Pass the banding behind the Intermodal Strap® XL handle and pull through.



Take the end and insert it back into the Intermodal Strap® XL handle.



Pull and pinch the banding around the handle till it comes together.